

1. Karl-Heinz Adler  
*3/36 Serielle Lineaturen*, 1990  
Lithograph  
Overall: 19 5/8 x 14 1/8 inches (49.85 x 35.88 cm)



2. Yaacov Agam  
*Birth of a Flag*, 1976  
Silkscreen on acrylic  
Unframed: 26 x 19 1/2 inches (66.04 x 49.53 cm)



3. Yaacov Agam  
*Birth of a Flag*, 1976  
Silkscreen on acrylic  
Unframed: 26 x 19 1/2 inches (66.04 x 49.53 cm)



4. William Allen  
*Spawned Silver Salmon: Paper Mill Creek*, 1976  
Watercolor on paper  
Overall: 23 x 38 inches (58.42 x 96.52 cm)  
Gift of Nancy O'Boyle



5. John Taylor Arms  
*Grun Orvieto*, 1926  
Etching on paper  
Image: 11 x 8 1/2 inches (27.94 x 21.59 cm)  
Sheet: 15 x 11 1/2 inches (38.1 x 29.21 cm)  
Matted: 22 x 16 inches (55.88 x 40.64 cm)  
Museum Collection, Gift of Mr. William E. Scott



## Checklist

6. Mario Avati

*Portrait d'un Trompet*, 1965

Mezzotint

Image: 12 x 19 inches (30.48 x 48.26 cm)

Sheet: 18 1/2 x 24 inches (46.99 x 60.96 cm)

Gift of Ruth Carter Stevenson



7. Mario Avati

*La Dernière Poule*, 1965-68

Mezzotint

Image: 8 1/2 x 10 1/2 inches (21.59 x 26.67 cm)

Sheet: 14 3/4 x 18 1/2 inches (37.47 x 46.99 cm)

Gift of Ruth Carter Stevenson



8. Mario Avati

*Le Poisson Magique*, 1965

Mezzotint

Image: 8 1/2 x 10 1/4 inches (21.59 x 26.04 cm)

Sheet: 15 x 18 3/4 inches (38.1 x 47.63 cm)

Gift of Ruth Carter Stevenson



9. Mario Avati

*Nature Morte au Coquetier*, 1966

Mezzotint

Image: 10 1/2 x 11 3/4 inches (26.67 x 29.85 cm)

Sheet: 21 x 19 3/4 inches (53.34 x 50.17 cm)

Gift of Ruth Carter Stevenson



10. Mario Avati

*Aspic et Poke-Epic*, 1965-68

Mezzotint

Image: 11 x 11 inches (27.94 x 27.94 cm)

Sheet: 22 1/4 x 15 inches (56.52 x 38.1 cm)

Gift of Ruth Carter Stevenson



11. Umetaro Azechi

*Stand on the Snow Gorge*, 1956

Woodblock and silkscreen on paper

Image: 21 1/4 x 13 3/4 inches (53.98 x 34.93 cm)

Sheet: 23 x 16 inches (58.42 x 40.64 cm)

Museum Collection, Gift of Mr. and Mrs. Edward R. Hudson, Jr.



## Checklist

12. Martin Baer

*Mother and Child*, 20th century

Soft ground etching

4 x 6 inches

Museum Collection



13. Varujan Boghosian

*Untitled*, 1980

Paper collage

Image: 14 1/4 x 19 1/4 inches (36.2 x 48.9 cm)

Framed: 19 3/4 x 23 3/4 x 1 1/8 inches (50.17 x 60.33 x 2.86 cm)

Gift of Nancy O'Boyle



14. George Cross Ball

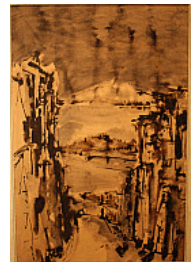
*Angel Island*, 20th century

Watercolor on paper

Unframed: 39 1/2 x 26 1/4 inches (100.33 x 66.68 cm)

Framed: 46 1/2 x 33 inches (118.11 x 83.82 cm)

Museum Collection, Gift of the William E. Scott Foundation



15. Leonard Baskin

*Porcupine*, 1951

Woodcut on paper, Artist's proof

24 x 36 inches

Museum Collection, Museum purchase



16. Leonard Baskin

*The Crow*, 20th century

Wood engraving

Image: 7 3/4 x 7 3/4 inches (19.69 x 19.69 cm)

Sheet: 11 1/4 x 11 1/4 inches (28.58 x 28.58 cm)

Matted: 11 3/4 x 11 3/4 inches (29.85 x 29.85 cm)

Museum Collection, Gift of Mr. and Mrs. Edward R. Hudson, Jr.



## Checklist

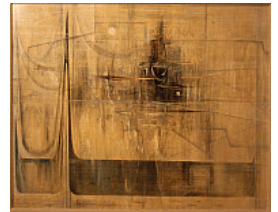
17. Leonard Baskin  
*Tobias and the Angel*, 1958  
Engraving on paper  
Image: 15 3/4 x 15 1/2 inches (40.01 x 39.37 cm)  
Sheet: 18 1/4 x 20 1/2 inches (46.36 x 52.07 cm)  
Museum Collection, Gift of Mr. and Mrs. Edward R. Hudson, Jr.



18. Tom Benrimo  
*Greek Figure*, 20th century  
Gouache on paper  
Unframed: 10 1/4 x 15 inches (26.04 x 38.1 cm)  
Framed: 23 1/4 x 18 3/4 x 2 inches (59.06 x 47.63 x 5.08 cm)  
Museum Collection, Gift of the William E. Scott Foundation



19. Tom Benrimo  
*Reflections*, 1951  
Oil on Masonite  
Unframed: 24 x 30 inches (60.96 x 76.2 cm)  
Framed: 35 x 41 x 2 1/4 inches (88.9 x 104.14 x 5.72 cm)  
Museum Collection, Gift of the William E. Scott Foundation



20. Frank Benson  
Title unknown, undated  
Etching  
Image: 11 3/4 x 14 1/2 inches (29.85 x 36.83 cm)  
Framed: 17 x 23 inches (43.18 x 58.42 cm)



21. Richard E. Bishop  
*Through the Willows*, undated  
Etching  
Image: 11 x 14 inches (27.94 x 35.56 cm)  
Framed: 18 1/8 x 21 7/8 inches (46.04 x 55.56 cm)



22. Richard E. Bishop  
*Canvas*, undated  
Image: 10 x 11 3/4 inches (25.4 x 29.85 cm)  
Sheet: 11 x 15 inches (27.94 x 38.1 cm)

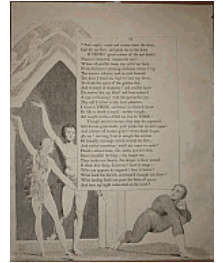


## Checklist

23. Kathleen Blackshear  
*Armadillo*, 20th century  
Watercolor on paper  
22 1/8 x 29 inches  
Museum Collection



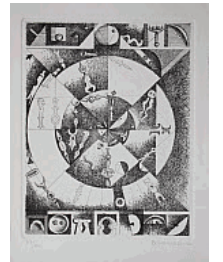
24. William Blake  
Plate from *The Complaint and the Consolation: or Night Thoughts*, undated  
Etching  
16 1/4 x 12 1/2 inches  
Museum Collection, Gift of Mr. and Mrs. Edward R. Hudson, Jr.



25. Bodegast  
*St. Marks*, undated  
Watercolor on paper  
13 3/4 x 18 1/2 inches  
Framed: 24 3/4 x 29 1/4 inches  
Museum Collection, Gift of the William E. Scott Foundation



26. Marcelo Bonevardi  
Page for a Horoscope, 1966  
Etching  
Image: 8 3/4 x 6 3/4 inches (22.23 x 17.15 cm)  
Sheet: 11 1/4 x 8 1/4 inches (28.58 x 20.96 cm)  
Gift of Ruth Carter Stevenson



27. Edward Borein  
*High, Wide and Handsome or Bucking Horse*, 20th century  
Etching  
8 x 5 inches  
Museum Collection



28. Gaston Hippolyte Ambroise Boucart  
*Le Port de Mornac*, undated  
Oil on canvas  
Unframed: 26 3/4 x 37 inches (67.95 x 93.98 cm)  
Framed: 32 1/2 x 43 1/4 x 2 inches (82.55 x 109.86 x 5.08 cm)  
Museum Collection, Gift of Comite de Diffusion de L'Art Francais dans les Musees des Estats Unis et du Canada



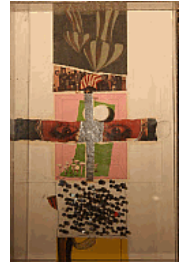


## Checklist

29. Dorothy Bowman  
*Pier and Sea*, 1960  
Serigraph on paper  
9 x 12 inches  
Museum Collection, Gift of Salzer Galleries



30. James Boynton  
Title unknown, 1964  
Mixed media  
Overall: 18 1/2 x 11 7/8 inches (46.99 x 30.16 cm)



31. Felix Bracquemond  
*Le Haut d'un Battant de Porte*, 1865  
Etching  
Image: 11 7/8 x 15 5/8 inches (30.16 x 39.69 cm)  
Sheet: 14 1/2 x 22 inches (36.83 x 55.88 cm)  
Museum Collection, Gift of Mr. and Mrs. Edward R. Hudson, Jr.



32. Cynthia Brants  
*Alder Gulch and Virginia City*, 1955  
Oil on canvas  
Unframed: 34 x 26 inches (86.36 x 66.04 cm)  
Framed: 40 1/2 x 33 x 1 1/2 inches (102.87 x 83.82 x 3.81 cm)  
Museum Collection, Gift of Mr. William E. Scott



33. Auguste Brouet  
*Les Couvertisseurs*, undated  
Etching on Japanese paper  
Image: 4 3/4 x 7 1/2 inches (12.07 x 19.05 cm)  
Sheet: 8 x 10 1/2 inches (20.32 x 26.67 cm)  
Matted: 16 x 22 inches (40.64 x 55.88 cm)  
Museum Collection, Gift of Mr. William E. Scott

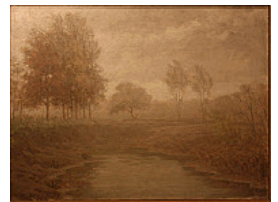


34. Auguste Brouet  
*Velin qui vient et alin qui s'en va*, undated  
Etching  
6 1/2 x 7 1/4 inches  
Museum Collection, Gift of Mr. William E. Scott



## Checklist

35. Auguste Brouet  
*Panhandlers*, undated  
Etching  
Image: 8 1/2 x 10 7/8 inches (21.59 x 27.62 cm)  
Sheet: 13 x 17 3/4 inches (33.02 x 45.09 cm)  
Matted: 16 x 22 inches (40.64 x 55.88 cm)  
Museum Collection, Gift of Mr. William E. Scott
36. R. Stanley Brown  
*Notre Dame de Paris*, undated  
Etching  
9 7/8 x 6 7/8 inches  
Museum Collection, Gift of Mrs. H. H. Brittingham
37. Tom Linn Brown  
*Grey Day*, 1915  
Oil on canvas  
25 x 33 inches  
Framed: 36 3/4 x 44 3/4 inches  
Museum Collection, Museum purchase
38. Brunacci  
Title unknown, undated  
Watercolor  
Sheet: 11 1/2 x 15 1/2 inches (29.21 x 39.37 cm)
39. A. Brunezzi  
*Great Fountain, Perugia*, undated  
Etching on paper  
8 1/4 x 5 3/4 inches  
Museum Collection, Gift of Mr. William E. Scott
40. George Elbert Burr  
*Giant Cactus, Tucson, Arizona*, undated  
Drypoint etching  
8 x 6 inches  
Museum Collection, Gift of Mr. William E. Scott



## Checklist

41. George Elbert Burr  
*Canyon Rim, Arizona*, undated  
Etching  
Image: 10 x 7 3/4 inches (25.4 x 19.69 cm)  
Sheet: 14 3/4 x 11 inches (37.47 x 27.94 cm)  
Matted: 22 x 16 inches (55.88 x 40.64 cm)  
Museum Collection, Gift of Mr. William E. Scott



42. George Elbert Burr  
*Black Pool*, undated  
Etching  
5 1/2 x 3 1/2 inches  
Museum Collection, Gift of Mr. William E. Scott



43. George Elbert Burr  
*Summer Cloud Apache Trail, Arizona*, undated  
Etching on paper  
Image: 7 3/4 x 10 inches (19.69 x 25.4 cm)  
Sheet: 11 1/2 x 12 1/2 inches (29.21 x 31.75 cm)  
Museum Collection, Gift of Mr. William E. Scott



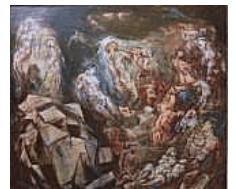
44. Barry Buxkamper  
*Space Pups*, c. 1969  
Oil on stuffed canvas  
40 x 25 x 10 inches  
Museum Collection, Gift of Mr. and Mrs. Edward R. Hudson, Jr.



45. Alexander Calder  
*Trois Oignons (Three Onions)*, 1965  
Lithograph  
Framed: 21 1/4 x 19 1/2 inches (53.98 x 49.53 cm)



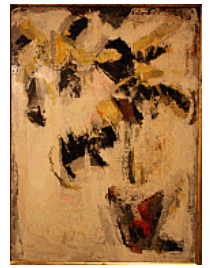
46. Kenneth Callahan  
*Rocks and the People*, 1951  
Oil on panel  
17 1/2 x 20 inches  
Museum Collection, Museum purchase





## Checklist

47. Jean-Marie Calmettes  
*Still Life*, undated  
Oil on composition board  
39 1/2 x 29 inches  
Museum Collection, Gift of the William E. Scott Foundation



48. Federico Castellon  
*The Bride (La Novia)*; c.1940  
Lithograph  
Image: 14 x 10 inches (35.56 x 25.4 cm)  
Sheet: 16 7/8 x 12 1/4 inches (42.86 x 31.12 cm)



49. Price Chamberlin  
*The Knights*, 1933  
Linoleum block print, hand colored  
Image: 6 1/8 x 7 1/16 inches (15.56 x 17.94 cm)  
Sheet: 17 3/16 x 14 1/16 inches (43.66 x 35.72 cm)  
Museum Collection, Gift of Mrs. H. H. Brittingham



50. Ivan Chermayeff  
Ninth Van Cliburn International Piano Competition, 1993  
Poster



51. Beth Lea Clardy  
*Central Entrance Stonegate*, 1991  
Oil on canvas  
Framed: 12 x 15 inches (30.48 x 38.1 cm)

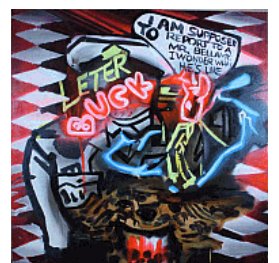
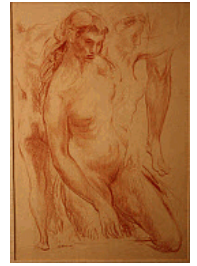


52. Nicola Costantino  
*Pig Ball*, 2000  
Aluminum and resin  
Gift of Massimo Martino Fine Arts and Projects



## Checklist

53. Jon Corbino  
*Study -- Woman*, 1941  
Sanguine pencil drawing  
18 1/2 x 12 1/2 inches  
Museum Collection
54. John E. Costigan  
*Workers in the Field*, undated  
Etching  
11 3/4 x 16 inches
55. Jack Coughlin  
*Owl of the Night*, 1966  
Print on paper  
Image: 10 1/2 x 14 3/4 inches (26.67 x 37.47 cm)  
Sheet: 15 x 19 1/2 inches (38.1 x 49.53 cm)  
Gift of Ruth Carter Stevenson
56. John Cowan  
*Seated Male Nude*, 1976  
Oil on canvas  
Unframed: 48 x 48 inches (121.92 x 121.92 cm)
57. Jasper Francis Cropsey  
*American Autumn, Starucca Valley, Erie Road*, 19th century  
Color lithograph  
15 1/2 x 26 1/2 inches  
Museum Collection, Museum purchase
58. Rosson Crow  
*Leter Buck Lichtenstein*, 2014  
Acrylic, spray paint, and oil on canvas  
Overall: 40 x 40 inches (101.6 x 101.6 cm)  
Courtesy of the Artist and Honor Fraser Gallery



## Checklist

59. W. Phelps Cunningham

*Tri-County Fair*, 20th century

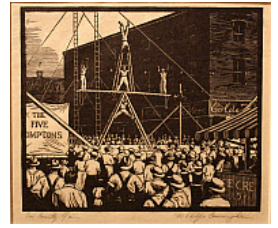
Block print on Japanese paper

Image: 6 3/4 x 7 7/8 inches (17.15 x 20 cm)

Sheet: 13 1/4 x 9 3/4 inches (33.66 x 24.77 cm)

Matted: 20 x 16 inches (50.8 x 40.64 cm)

Museum Collection, Gift of Mrs. H. H. Brittingham



60. W. Phelps Cunningham

*Fruit Shop Villefranche*, 20th century

Relief cut

Image: 8 3/8 x 5 13/16 inches (21.27 x 14.76 cm)

Sheet: 16 15/16 x 13 1/2 inches (43.02 x 34.29 cm)

Museum Collection, Gift of Mrs. H. H. Brittingham



61. Enrico D'Assia

*Hide*, 1958

Oil on canvas

Unframed: 13 1/2 x 17 1/4 inches (34.29 x 43.82 cm)

Framed: 20 x 23 3/4 x 2 5/8 inches (50.8 x 60.33 x 6.67 cm)

Museum Collection, Gift of the William E. Scott Foundation



62. Enrico D'Assia

*Quicksands*, 1953

Gouache on paper

16 3/4 x 22 3/4 inches

Museum Collection, Gift of the William E. Scott Foundation



63. Arthur B. Davies

*Doorway to Illusion*, 1929

Etching

Image: 7 3/4 x 6 5/8 inches (19.69 x 16.83 cm)

Sheet: 12 x 9 5/8 inches (30.48 x 24.45 cm)



64. Owen Day

*A Bird Flew Over*, 20th century

Watercolor

Unframed: 16 1/4 x 9 inches (41.28 x 22.86 cm)

Framed: 25 1/4 x 17 1/2 x 3/4 inches (64.14 x 44.45 x 1.91 cm)

Museum Collection



## Checklist

65. Bernard de Guinhald

*Saint Michel de Maurienne*, c. 1910

Oil on canvas

Unframed: 18 1/4 x 15 inches (46.36 x 38.1 cm)

Framed: 22 x 18 7/8 inches (55.88 x 47.94 cm)

Museum Collection, Gift of Comitee de Diffusion de l'Art Francais dans les Musees des Etats Unis et du Canada



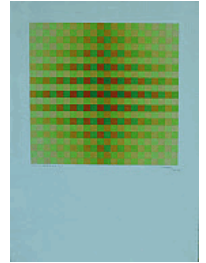
66. Hugo Rodolfo Demarco

*Vibracion Doribada a la Luz*, 1962

Gouache

Image: 13 1/4 x 13 1/4 inches (33.66 x 33.66 cm)

Museum Collection, Gift of Mr. William E. Scott



67. Stevan Dohanos

*West Quaddy Light*, 20th century

Wood engraving

Image: 9 3/4 x 8 inches (24.77 x 20.32 cm)

Sheet: 17 1/2 x 13 inches (44.45 x 33.02 cm)

Museum Collection, Gift of Mrs. H. H. Brittingham



68. Joseph Domjan

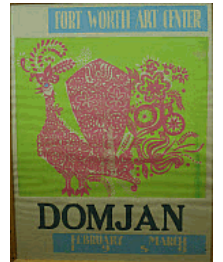
Exhibition Poster, 1959

Poster

Unframed: 26 1/8 x 20 inches (66.36 x 50.8 cm)

Framed: 27 3/4 x 22 x 1 1/4 inches (70.49 x 55.88 x 3.18 cm)

Museum Collection



69. Piero Dorazio

*Untitled*, 1964

Watercolor

Sheet: 13 x 10 inches (33.02 x 25.4 cm)

Gift of Ruth Carter Stevenson



70. Piero Dorazio

*Untitled*, 1964

Watercolor

Sheet: 13 x 10 inches (33.02 x 25.4 cm)

Gift of Ruth Carter Stevenson



## Checklist

71. Letitia Eldredge

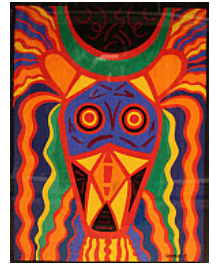
*Lioness African Mask*, 1987

Gouache

Image: 29 1/2 x 22 1/4 inches (74.93 x 56.52 cm)

Framed: 36 x 28 1/2 x 2 inches (91.44 x 72.39 x 5.08 cm)

Gift of Anne Bass



72. Perry Ellis

*Getting Together*, 1994

Acrylic on canvas

Framed: 16 x 20 inches (40.64 x 50.8 cm)



73. John Erickson

*Lost Lake*, 1952

Oil on canvas

Unframed: 12 x 30 inches (30.48 x 76.2 cm)

Framed: 19 7/8 x 37 3/4 x 3 inches (50.48 x 95.89 x 7.62 cm)

Museum Collection, Museum purchase



74. Maurice Estève

*Arizoverf*, 1972

Lithograph

Image: 13 x 10 inches (33.02 x 25.4 cm)

Framed: 19 1/4 x 16 1/4 inches (48.9 x 41.28 cm)



75. Feraris

Title unknown, undated

Oil on canvas

Unframed: 21 1/4 x 26 inches (53.98 x 66.04 cm)



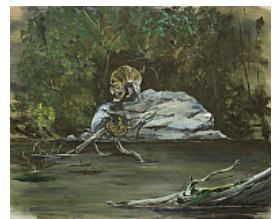
76. Florez

*Mountain Lion and Snake*, undated

Oil on canvas

Overall: 20 x 26 inches (50.8 x 66.04 cm)

Gift of Mr. and Mrs. Eric Hyden





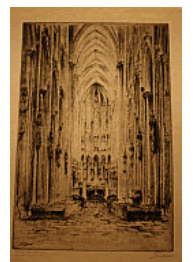
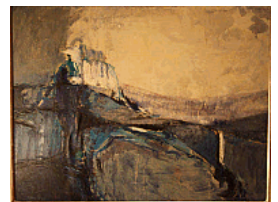
## Checklist

77. Seymour Fogel  
*Minstrels*, 1954  
Oil on Masonite  
Unframed: 22 x 26 inches (55.88 x 66.04 cm)  
Framed: 29 x 32 1/2 x 1 3/4 inches (73.66 x 82.55 x 4.45 cm)  
Museum Collection, Gift of the William E. Scott Foundation
78. Antonio Frasconi  
*The Dog and the Crocodile*, 1950  
Woodcut  
16 x 11 3/8 inches  
Museum Collection, Gift of Mr. and Mrs. Edward R. Hudson, Jr.
79. Antonio Frasconi  
*Self Portrait*, 1950  
Woodcut  
Image: 22 1/2 x 7 inches (57.15 x 17.78 cm)  
Sheet: 29 x 10 1/2 inches (73.66 x 26.67 cm)  
Museum Collection, Gift of Mr. and Mrs. Edward R. Hudson, Jr.
80. James Frazer  
*Artist's Studio*, 20th century  
Watercolor  
Unframed: 19 3/4 x 23 3/4 inches (50.17 x 60.33 cm)  
Framed: 32 x 35 3/8 x 7/8 inches (81.28 x 89.85 x 2.22 cm)  
Museum Collection
81. James Frazer  
*West Side*, 1955  
Oil on Masonite  
36 x 48 inches  
Museum Collection, Museum purchase
82. Erich Fricke  
*Portrait of a Woman*, undated  
Etching on J. Whatman paper  
Image: 9 1/2 x 7 3/4 inches (24.13 x 19.69 cm)  
Sheet: 11 1/2 x 9 1/2 inches (29.21 x 24.13 cm)  
Museum Collection, Gift of Mr. William E. Scott



## Checklist

83. Robert Fried  
*(3 cents U.S.A.)*, 1971  
Offset lithograph  
Image: 19 1/2 x 15 7/8 inches (49.53 x 40.32 cm)  
Sheet: 30 x 21 inches (76.2 x 53.34 cm)  
Museum Collection, Gift of Mr. and Mrs. Edward R. Hudson, Jr.
84. Robert Fried  
Postage stamps, 1971  
Off-set lithographs  
Museum Collection, Gift of Mr. and Mrs. Edward R. Hudson, Jr.
85. Yves Ganne  
*White Roses*, 1953  
Oil on canvas  
Unframed: 31 x 25 inches (78.74 x 63.5 cm)  
Framed: 37 1/4 x 31 1/4 inches (94.62 x 79.38 cm)  
Museum Collection, Gift of the William E. Scott Foundation
86. Emil Ganso  
*At the Sea Shore*, 1932  
Wood engraving  
Image: 8 x 12 inches (20.32 x 30.48 cm)  
Sheet: 11 1/2 x 15 3/4 inches (29.21 x 40.01 cm)  
Museum Collection, Gift of Mrs. H. H. Brittingham
87. Mary Gehr  
*Yucatecan Vista*, c. 1960  
Oil on cardboard  
Unframed: 21 1/4 x 27 1/2 inches (53.98 x 69.85 cm)  
Framed: 28 3/4 x 34 3/4 x 1 1/2 inches (73.03 x 88.27 x 3.81 cm)  
Museum Collection, Gift of the William E. Scott Foundation
88. Paul Geissler  
*Koln Cathedral, Interior View*, undated  
Etching  
11 1/4 x 7 3/4 inches  
Museum Collection, Gift of Mr. William E. Scott



## Checklist

89. Paul Geissler  
*Koln Cathedral, West Front*, undated  
Etching  
Image: 13 x 7 3/4 inches (33.02 x 19.69 cm)  
Sheet: 17 1/4 x 12 1/2 inches (43.82 x 31.75 cm)  
Museum Collection, Gift of Mr. William E. Scott



90. Paul Geissler  
*Koln Cathedral, South Side*, undated  
Etching  
9 3/4 x 9 1/2 inches  
Museum Collection, Gift of Mr. William E. Scott



91. Paul Geissler  
*Ponte Vecchio, Firenze*, undated  
Etching  
5 1/2 x 9 1/2 inches  
Museum Collection, Gift of Mr. William E. Scott



92. William S. Gisch  
*In a French Cafe*, 1930  
Lithograph  
Image: 5 3/16 x 8 3/16 inches (13.18 x 20.8 cm)  
Sheet: 9 3/4 x 12 inches (24.77 x 30.48 cm)  
Museum Collection, Gift of Mrs. H. H. Brittingham



93. Thomas Glassford  
*Untitled*, undated  
Gourd and resin wall sculpture  
Overall: 11 3/4 x 13 inches (29.85 x 33.02 cm)  
Gift of Mr. and Mrs. R. Patrick Woodson III

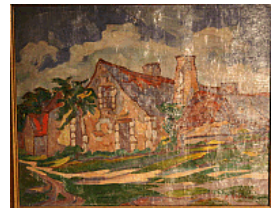


94. Robert Goodnough  
Title unknown, 1960  
Lithograph  
9 3/8 x 12 1/2 inches  
Museum Collection, Gift of Mr. and Mrs. Edward R. Hudson, Jr.



## Checklist

95. Gouro Tribe, Ivory Coast, Africa  
Antelope Mask, undated  
Wood  
17 x 5 1/2 inches  
Museum Collection, Gift of Mr. Cornelius Ruxton Love, Jr., New York
96. Gordon Grant  
*Fisherman*, 20th century  
Aquatint and sugar lift on paper  
Image: 7 3/4 x 9 3/4 inches (19.69 x 24.77 cm)  
Sheet: 11 x 13 inches (27.94 x 33.02 cm)  
Museum Collection, Gift of Mrs. J. Elmer Thomas
97. Alexandre Marie Grassin  
*La Maison au Four*, c. 1900  
Oil on canvas  
Unframed: 13 1/4 x 16 inches (33.66 x 40.64 cm)  
Framed: 17 x 21 x 1 inches (43.18 x 53.34 x 2.54 cm)  
Museum Collection, Gift of Comite de Diffusion de l'Art Francais dans les Musees des Etats Unis et du Canada
98. Ellof Griffe  
*Plowing*, 1953  
Color woodcut on Japanese paper  
Image: 12 1/2 x 15 1/2 inches (31.75 x 39.37 cm)  
Sheet: 15 x 18 inches (38.1 x 45.72 cm)  
Museum Collection, Gift of the William E. Scott Foundation
99. John Guerin  
*Tidal Basin*, c. 1950  
Oil on canvas  
41 1/2 x 44 inches  
Museum Collection, Gift of the William E. Scott Foundation
100. Honore C. Guilbeau  
*Night*, 1932  
Lithograph  
Image: 7 1/4 x 7 1/8 inches (18.42 x 18.1 cm)  
Sheet: 17 1/4 x 13 1/2 inches (43.82 x 34.29 cm)  
Museum Collection, Gift of Mrs. H. H. Brittingham





## Checklist

101. Norma Bassett Hall  
*La Gaude - France*, 1943  
Color block print  
7 x 9 1/2 inches  
Museum Collection, Gift of Mrs. J. Elmer Thomas
102. Tracy Harris  
*A Funnel Made of Wind or Water*, 1987  
Pencil and gouache on paper  
Framed: 37 x 48 1/2 x 1 inches (93.98 x 123.19 x 2.54 cm)  
Gift of Nancy O'Boyle
103. Morris Henry Hobbs  
*Brittany Seaport*, undated  
Etching  
Image: 8 3/8 x 6 3/8 inches (21.27 x 16.19 cm)  
Sheet: 17 1/4 x 13 9/16 inches (43.82 x 34.45 cm)  
Museum Collection, Gift of Mrs. H. H. Brittingham
104. Carl Hofer  
*Girl Reading*, 1922  
Drypoint etching  
8 1/4 x 6 3/4 inches  
Museum Collection, Museum purchase
105. Katsushika Hokusai  
*Fifty-three Stations of the Tokaido*, undated  
Color woodcut  
8 3/4 x 6 1/2 inches  
Museum Collection, Gift of the William E. Scott Foundation
106. Katsushika Hokusai  
*Fifty-three Stations of the Tokaido*, undated  
Color woodcut  
8 3/4 x 6 1/2 inches  
Museum Collection, Gift of the William E. Scott Foundation





## Checklist

107. Katsushika Hokusai  
*Fifty-three Stations of the Tokaido*, undated  
Color woodcut  
8 3/4 x 6 1/2 inches  
Museum Collection, Gift of the William E. Scott Foundation
108. Katsushika Hokusai  
*Fifty-three Stations of the Tokaido*, undated  
Color woodcut  
8 3/4 x 6 1/2 inches  
Museum Collection, Gift of the William E. Scott Foundation
109. Lester Hornby  
*La Porte de Valois Palais Royal*, undated  
Etching  
7 1/4 x 6 1/8 inches  
Museum Collection, Gift of the American Federation of Arts
110. Eric Isenburger  
*Shadows of Tepoztlan*, 1955  
Oil on canvas  
Unframed: 12 1/2 x 20 1/2 inches (31.75 x 52.07 cm)  
Framed: 20 x 28 1/4 inches (50.8 x 71.76 cm)  
Museum Collection, Gift of the William E. Scott Foundation
111. Lester Johnson  
*Rue D'Alsia, Paris*, undated  
Lithograph  
22 x 17 7/8 inches  
Museum Collection, Gift of Mr. and Mrs. Edward R. Hudson Jr.
112. Marjorie Johnson  
*Castle by the Sea*, c. 1940  
Oil on canvas  
Unframed: 12 1/4 x 23 1/2 inches (31.12 x 59.69 cm)  
Framed: 21 x 32 1/2 x 2 1/2 inches (53.34 x 82.55 x 6.35 cm)  
Museum Collection, Museum purchase



## Checklist

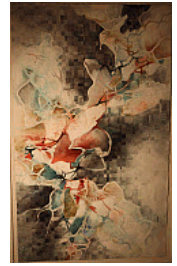
113. Gale Johnston

*Heartlight*, undated

Watercolor

Overall: 74 x 52 inches (187.96 x 132.08 cm)

Gift of Carol Wood



114. Mervin Jules

*Wounded*, c. 1945

Mixed media on Masonite

Unframed: 40 x 29 inches (101.6 x 73.66 cm)

Framed: 50 1/4 x 39 x 2 1/2 inches (127.64 x 99.06 x 6.35 cm)

Museum Collection, Gift of the Treasury of the United States of America

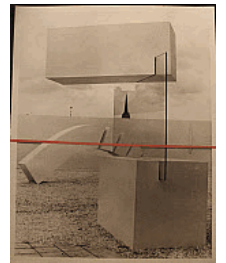


115. Menashe Kadishman

Title unknown, 1970

Photograph, photo tape, and transparent paper

Overall: 21 x 16 3/4 inches (53.34 x 42.55 cm)



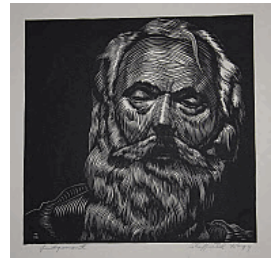
116. Sheffield Kagy

*Judgement*, undated

Relief cut

8 15/16 x 9 inches

Museum Collection, Gift of Mrs. H. H. Brittingham



117. Philip Kappel

*At Jacmel, Haiti*, undated

Drypoint

Image: 7 7/16 x 5 7/8 inches (18.89 x 14.92 cm)

Sheet: 19 1/16 x 12 11/16 inches (48.42 x 32.23 cm)

Museum Collection, Gift of Mrs. H. H. Brittingham



118. John Kelly

*Kalama Hawaii*, undated

Etching

Image: 8 1/2 x 7 inches (21.59 x 17.78 cm)

Framed: 20 3/4 x 15 1/8 inches (52.71 x 38.42 cm)



## Checklist

119. Clinton King  
*Bistro*, c. 1943  
Oil on canvas  
Unframed: 20 x 16 inches (50.8 x 40.64 cm)  
Framed: 27 x 22 3/4 x 1/2 inches (68.58 x 57.79 x 1.27 cm)  
Museum Collection, Gift of Bertram Newhouse



120. Clinton King  
*Anita*, c. 1940  
Oil on canvas  
Unframed: 20 x 16 inches (50.8 x 40.64 cm)  
Framed: 29 1/4 x 25 x 2 1/2 inches (74.3 x 63.5 x 6.35 cm)  
Museum Collection, Museum purchase



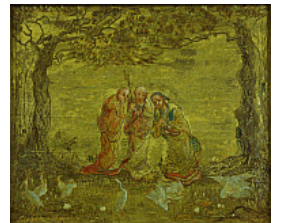
121. Eldridge Kinney  
*Hofbrauhaus*, undated  
Etching  
6 3/4 x 4 3/4 inches  
Museum Collection, Gift of Mr. William. E. Scott



122. Eldridge Kinney  
*Druckblick*, 1922  
Etching  
6 1/4 inches x 5 3/4 inches  
Museum Collection, Gift of Mr. William. E. Scott



123. Florence Kroger  
*Three Wise Men*, c. 1950  
Oil and gold leaf on panel  
8 3/4 x 10 1/2 inches  
Museum Collection, Gift of the William E. Scott Foundation



124. Marguerite Kirmse  
*Let's Play*, undated  
Etching  
9 3/4 x 7 1/2 inches  
Museum Collection, Gift of Mrs. R. E. Hardwicke



## Checklist

125. Marguerite Kirmse  
*Birds Must Be There*, undated  
Etching  
8 1/4 x 11 inches  
Museum Collection, Gift of Mrs. R. E. Hardwicke



126. Marguerite Kirmse  
*There'll Always be an England*, undated  
Etching  
10 1/4 x 8 1/4 inches  
Museum Collection, Gift of Mrs. R. E. Hardwicke



127. Marguerite Kirmse  
*Full Cry*, undated  
Etching  
10 x 7 3/4 inches  
Museum Collection, Gift of Mrs. R. E. Hardwicke



128. Marguerite Kirmse  
*For Defense*, undated  
Etching  
7 3/4 x 9 1/2 inches  
Museum Collection, Gift of Mrs. R. E. Hardwicke



129. Marguerite Kirmse  
*Good Boy*, undated  
Etching  
8 x 5 3/4 inches  
Museum Collection, Gift of Mrs. R. E. Hardwicke



130. Marguerite Kirmse  
*Loyalty*, undated  
Etching  
7 1/4 x 10 1/4 inches  
Museum Collection, Gift of Mrs. R. E. Hardwicke





## Checklist

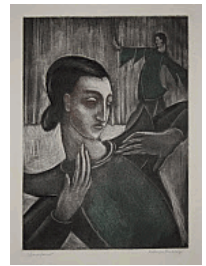
131. Marguerite Kirmse  
*Going to Cover*, undated  
Etching  
7 x 14 1/4 inches  
Museum Collection, Gift of Mrs. R. E. Hardwicke
132. Marguerite Kirmse  
*Black on White*, undated  
Etching  
7 inches x 10 3/4 inches  
Museum Collection, Gift of Mrs. R. E. Hardwicke
133. Mark Kiselis  
*Into the Blue Wave*, 2006  
Acrylic on board  
Framed: 10 x 8 inches (25.4 x 20.32 cm)
134. Misch Kohn  
*Requiem*, 1963  
Etching  
40 x 29 inches
135. Abraham Krol  
Title unknown, undated  
Engraving and color etching, Paper Richard de Bas Auvergne a la Main  
25 1/2 x 20 inches  
Museum Collection, Gift of Mr. and Mrs. Edward R. Hudson, Jr.
136. Bila Kron  
*Venice: San Marco*, 1924  
Etching  
6 1/2 x 4 3/4 inches  
Museum Collection, Gift of Mr. William. E. Scott





## Checklist

137. Kalman Kubinyi  
*Saraband*, undated  
Mezzotint and etching  
Image: 10 5/16 x 7 3/4 inches (26.19 x 19.69 cm)  
Sheet: 17 1/16 x 13 9/16 inches (43.34 x 34.45 cm)  
Museum Collection, Gift of Mrs. H. H. Brittingham
138. Jean-Emile Laboureur  
*La Promenade Sur le Port*, 1935  
Line engraving and etching  
Unframed: 8 7/16 x 3 3/4 inches (21.43 x 9.53 cm)  
Museum Collection, Gift of Mrs. H. H. Brittingham
139. Armin Landeck  
*Manhattan Nocturne*, 1938  
Drypoint  
Image: 7 1/8 x 11 7/8 inches (18.1 x 30.16 cm)  
Sheet: 10 11/16 x 15 5/16 inches (27.15 x 38.89 cm)  
Museum Collection
140. Lane  
*Portrait*, undated  
Oil on canvas  
Unframed: 20 x 24 inches (50.8 x 60.96 cm)
141. Henri le Riche  
*Vieille femme endormie*, 19<sup>th</sup> c.  
Etching  
Image: 7 3/4 x 8 1/4 inches (19.69 x 20.96 cm)  
Museum Collection, Gift of Mr. William E. Scott
142. Henri le Riche  
*Saint Chapelle*, 19<sup>th</sup> c.  
Etching  
Image: 8 1/2 x 4 1/4 inches (21.59 x 10.8 cm)  
Museum Collection, Gift of Mr. William E. Scott



## Checklist

143. Henri le Riche

*Le Bouquiniste*, 19<sup>th</sup> c.

Drypoint etching

Image: 9 1/2 x 6 3/4 inches (24.13 x 17.15 cm)

Museum Collection, Gift of Mr. William E. Scott



144. Henri le Riche

*Vieille Normande*, 19<sup>th</sup> c.

Etching

Image: 6 3/4 x 5 inches (17.15 x 12.7 cm)

Museum Collection, Gift of Mr. William E. Scott



145. Henri le Riche

*Nain de Bateaux*, 19<sup>th</sup> c.

Etching

Image: 7 1/4 x 3 3/4 inches (18.42 x 9.53 cm)

Museum Collection, Gift of Mr. William E. Scott



146. Henri le Riche

*Notre Dame*, 19<sup>th</sup> c.

Etching

Image: 13 1/4 x 10 1/4 inches (33.66 x 26.04 cm)

Museum Collection, Gift of Mr. William E. Scott



147. Jenny Lee

*Arrow*, 1987

Bronze

Overall: 18 x 12 1/2 x 8 inches (45.72 x 31.75 x 20.32 cm)

Gift of Nancy O'Boyle



148. Clare Leighton

*Corsican Washerwoman*, undated

Wood engraving

Image: 8 1/2 x 10 inches (21.59 x 25.4 cm)

Museum Collection, Mrs. H. H. Brittingham, #14 Print Club, Cleveland, Ohio



## Checklist

149. Geoffrey Lewis  
*Bacchanal*, 1961  
Oil on Masonite  
Overall: 15 x 18 1/2 inches (38.1 x 46.99 cm)  
Museum Collection, Gift of Mr. and Mrs. Edward R. Hudson, Jr.



150. Russell T. Limbach  
*Student and Master*, 20<sup>th</sup> c.  
Lithograph  
8 15/16 x 11 3/16 inches  
Museum Collection, Gift of Mrs. H. H. Brittingham



151. Russell T. Limbach  
*Strictly Kosher*, 20th century  
Etching  
7 x 6 15/16 inches  
Museum Collection, Gift of Mrs. H. H. Brittingham



152. Richard Lindner  
*Spoletto 1967*, 1967  
Silkscreen  
39 1/2 x 27 1/2 inches  
Museum Collection, Gift of Mr. & Mrs. Edward R. Hudson, Jr.



153. Huc-Mazelet Luquiens  
*Princeton University Library*, 1916  
Etching  
8 x 6 inches  
Museum Collection, Gift of Mr. William E. Scott



154. Huc-Mazelet Luquiens  
*Princeton - Whig & Clio Halls*, 1916  
Etching  
8 x 6 inches  
Museum Collection, Gift of Mr. William E. Scott



## Checklist

155. Huc-Mazelet Luquiens  
*Princeton - Nassau Hall, 1916*  
Etching  
8 3/4 x 7 3/4 inches  
Museum Collection, Gift of Mr. William E. Scott
156. Huc-Mazelet Luquiens  
*Princeton - Cleveland Tower - Graduate College, 1916*  
Etching  
8 3/4 x 6 1/2 inches  
Museum Collection, Gift of Mr. William E. Scott
157. Huc-Mazelet Luquiens  
*Princeton - Stafford Little Hall, 1916*  
Etching  
7 1/2 x 6 inches  
Museum Collection, Gift of Mr. William E. Scott
158. Huc-Mazelet Luquiens  
*Princeton - Holder Hall, 1916*  
Etching  
8 x 6 inches  
Museum Collection, Gift of Mr. William E. Scott
159. Huc-Mazelet Luquiens  
*Princeton - Seventy-Nine Hall, 1916*  
Etching  
8 x 6 inches  
Museum Collection, Gift of Mr. William E. Scott
160. Jack Mangwida Wurrawilya  
*Stingray, undated*  
Bark painting



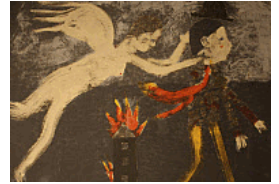


## Checklist

161. Jack Mangwida Wurrawilya  
*Kangaroo*, undated  
Bark painting



162. Deloss McGraw  
*Leaving Home*, 1997  
Five-color lithograph  
Sheet: 17 1/4 x 24 1/4 inches (43.82 x 61.6 cm)



163. Adolfo Mexiac  
*Plateria Mexicana*, undated  
Framed: 32 x 24 inches (81.28 x 60.96 cm)  
Museum Collection



164. Robert Motherwell  
*Spoletto 1968*, 1968  
Silkscreen  
39 1/2 x 27 1/2 inches  
Museum Collection, Gift of Mr. and Mrs. Edward R. Hudson, Jr.



165. Seong Moy  
*Little Act on Horseback*, 20th century  
Color woodcut  
Image: 12 3/4 x 12 3/4 inches (32.39 x 32.39 cm)  
Museum Collection, Gift of Artists Guild purchased from Weyhe Gallery, New York



166. Eadweard Muybridge  
*Animal Locomotion*, 1887  
Collotype  
13 1/2 x 19 1/4 inches





## Checklist

167. Eadweard Muybridge  
*Animal Locomotion Plate 342*, 1887  
Collotype  
Matted: 22 3/4 x 25 1/2 inches (57.79 x 64.77 cm)



168. Sandor Nador  
*View of Prague*, 20th century  
Etching  
9 1/2 x 13 3/4 inches  
Museum Collection, Gift of Mr. William E. Scott



169. F. M. Nakayama  
*Cosmic Garden*, 1962  
Print on paper  
Image: 12 1/2 x 17 1/2 inches (31.75 x 44.45 cm)  
Sheet: 17 1/2 x 22 3/4 inches (44.45 x 57.79 cm)  
Gift of Ruth Carter Stevenson



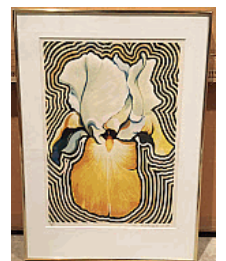
170. Robert Lyn Nelson  
*Orca*, 1980  
Oil on canvas  
18 x 36 inches



171. Lowell Nesbitt  
*Electric Tulip*, 1980  
Serigraph  
16 x 20 inches



172. Lowell Nesbitt  
*Electric Iris*, 1980  
Serigraph  
16 x 20 inches



## Checklist

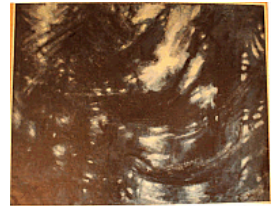
173. Lowell Nesbitt  
*Electric Lily*, 1980  
Serigraph  
16 x 20 inches



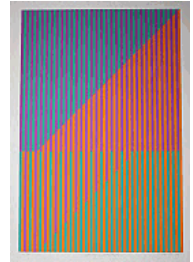
174. Louis Orr  
*Capitol, Washington*, 20th century  
Etching  
15 1/4 x 26 1/4 inches  
Museum Collection, Gift through Yale University from an unknown donor



175. James Penney  
*Night, Pines*, c. 1958  
Oil on canvas  
Unframed: 38 1/2 x 49 inches (97.79 x 124.46 cm)  
Framed: 55 x 44 7/8 x 1 1/2 inches (139.7 x 113.98 x 3.81 cm)  
Museum Collection, Museum purchase



176. Terri Priest  
*Summer Solitude*, 1975  
Print on paper  
Image: 21 x 16 inches (53.34 x 40.64 cm)  
Sheet: 30 x 22 inches (76.2 x 55.88 cm)  
Gift of Ruth Carter Stevenson



177. Terri Priest  
*Summer Solitude*, 1975  
Print on paper  
Image: 21 x 16 inches (53.34 x 40.64 cm)  
Sheet: 30 x 22 inches (76.2 x 55.88 cm)  
Gift of Ruth Carter Stevenson



178. Lee Purcell  
*Olé*, 1953  
Etching  
Framed: 11 3/4 x 14 1/2 inches (29.85 x 36.83 cm)



## Checklist

179. Ged Quinn  
*Father Don't You See That I Am Burning*, 2012  
Polymer photogravure  
Sheet: 14 3/8 x 16 5/16 inches (36.51 x 41.43 cm)



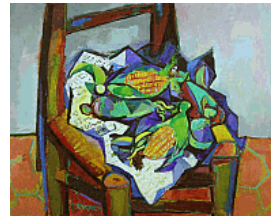
180. Ged Quinn  
*Father Don't You See That I Am Burning*, 2012  
Polymer photogravure  
Sheet: 14 3/8 x 16 5/16 inches (36.51 x 41.43 cm)



181. Abraham Rattner  
*Among Those Who Stood There*, 20th century  
Color etching  
6 7/8 x 9 7/8 inches  
Museum Collection



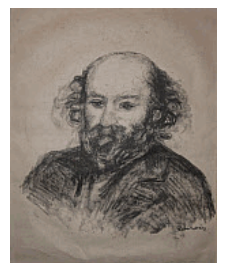
182. Abraham Rattner  
*Still Life with Chair*, 1946  
Oil on canvas  
Unframed: 21 1/4 x 25 1/2 inches (53.98 x 64.77 cm)  
Framed: 31 x 35 x 1 7/8 inches (78.74 x 88.9 x 4.76 cm)  
Museum Collection, Museum purchase



183. Dickson Reeder  
*Entrance to the Lapis Mines*, undated  
Etching  
Sheet: 19 3/4 x 25 3/4 inches (50.17 x 65.41 cm)



184. Pierre-Auguste Renoir  
*Portrait of Cezanne*, 1902  
Lithograph  
13 x 10 1/4 inches  
Museum Collection



## Checklist

185. Edda Renouf  
*Visible Sound Piece 1*, 1978  
Acrylic on linen  
Unframed: 27 1/2 x 27 1/2 inches (69.85 x 69.85 cm)



186. Betsy Graves Reyneau  
*William E. Scott*, c. 1920  
Conte crayon  
Unframed: 24 1/2 x 18 1/4 inches (62.23 x 46.36 cm)  
Framed: 26 1/2 x 20 1/4 x 1/2 inches (67.31 x 51.44 x 1.27 cm)  
Museum Collection, Gift of the William E. Scott Foundation



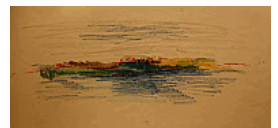
187. Marco Ricci  
Title unknown, undated  
Ink  
8 1/2 x 12 1/4 inches



188. Kurt Albert Ferdinand Roesch  
*Crows*, 20th century  
Watercolor  
Unframed: 13 x 35 inches (33.02 x 88.9 cm)  
Framed: 22 1/4 x 33 1/4 x 7/8 inches (56.52 x 84.46 x 2.22 cm)  
Museum Collection



189. Marina Romanoff  
*Landscape*, undated  
Pastel on paper  
Overall: 10 1/2 x 16 7/8 inches (26.67 x 42.86 cm)

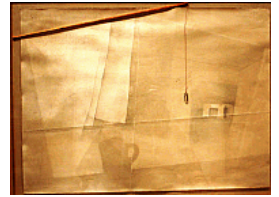


190. Marina Romanoff  
*Composition*, undated  
Pastel on paper  
Overall: 11 x 9 inches (27.94 x 22.86 cm)



## Checklist

191. Thomas Rose  
*Minnesota Paper Clip*, 1977  
Mixed media on paper  
Framed: 25 3/4 x 33 1/4 x 1 1/4 inches (65.41 x 84.46 x 3.18 cm)  
Gift of Nancy O'Boyle



192. Ernest David Roth  
*Toledo The Approach*, 1921  
Etching  
11 1/4 x 11 3/4 inches  
Museum Collection, Gift of Mr. William E. Scott



193. Chauncey Foster Ryder  
*Cutting the Pines*, undated  
Etching  
9 1/2 x 7 inches  
Museum Collection, Gift of Mr. William E. Scott



194. Hasegawa Sadanobu  
*Landscape*, 19th century  
Woodcut  
9 1/4 x 6 1/4 inches  
Museum Collection, Gift of the William E. Scott Foundation



195. Edward Schiwetz  
*Sunday Afternoon at Eagle Pass*, 20th century  
Gouache and oil glaze  
Unframed: 17 x 22 inches (43.18 x 55.88 cm)  
Framed: 29 15/16 x 34 3/4 inches (76.04 x 88.27 cm)  
Museum Collection



196. Werner Scholtz  
*Sansouci Schloss*, undated  
Etching  
5 x 7 inches  
Museum Collection, Gift of Mr. William E. Scott



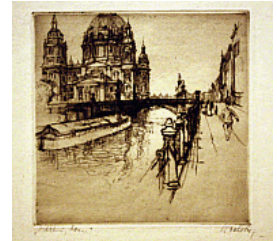


## Checklist

197. Werner Scholtz  
*Berlin, Schloss*, undated  
Etching  
5 x 6 inches  
Museum Collection, Gift of Mr. William E. Scott



198. Werner Scholtz  
*Berlin Dom*, undated  
Etching  
5 x 5 inches  
Museum Collection, Gift of Mr. William E. Scott



199. Werner Scholtz  
*Potsdam—Stadt Schloss*, undated  
Etching  
5 x 7 inches  
Museum Collection, Gift of Mr. William E. Scott



200. Schultz  
*Fishing Floats*, 1967  
Lithograph  
Image: 16 1/2 x 21 1/2 inches (41.91 x 54.61 cm)  
Sheet: 19 1/8 x 25 3/4 inches (48.58 x 65.41 cm)  
Gift of Ruth Carter Stevenson



201. Ralph Fletcher Seymour  
*A Paris Wine Shop*, 20th century  
Etching  
Image: 10 x 7 7/8 inches (25.4 x 20 cm)  
Sheet: 13 3/16 x 11 1/2 inches (33.5 x 29.21 cm)  
Museum Collection, Gift of Mrs. J. Elmer Thomas



202. William Strang  
*Rudyard Kipling (portrait)*, 1898  
Engraving  
Unframed: 14 x 10 inches (35.56 x 25.4 cm)  
Framed: 22 1/4 x 17 3/4 x 3/4 inches (56.52 x 45.09 x 1.91 cm)  
Museum Collection, Gift of Mr. and Mrs. Edward R. Hudson, Jr.



## Checklist

**203.** William Sommer

*The Sunday Boy*, 1932-33

Lithograph

Unframed: 12 7/8 x 9 1/2 inches (32.7 x 24.13 cm)

Framed: 19 x 12 9/16 inches (48.26 x 31.91 cm)

Museum Collection, Gift of Mrs. H. H. Brittingham



**204.** Bettina Steinke

*The Guard*, undated

Oil on canvas

Unframed: 10 x 8 inches (25.4 x 20.32 cm)

Framed: 21 1/2 x 16 x 1 inches (54.61 x 40.64 x 2.54 cm)

Museum Collection, Gift of the William E. Scott Foundation



**205.** Earl Stroh

*Taos West*, undated

Etching

Sheet: 19 3/4 x 26 inches (50.17 x 66.04 cm)



**206.** Peter Stroud

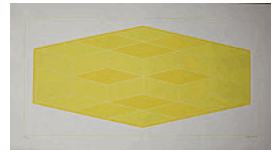
*Extended Yellow*, 1966

Lithograph

Image: 14 1/2 x 29 inches (36.83 x 73.66 cm)

Sheet: 18 3/4 x 33 inches (47.63 x 83.82 cm)

Gift of Ruth Carter Stevenson



**207.** Graham Sutherland

*Insects (Bees)*, 1963

Lithograph

Sheet: 30 x 20 1/2 inches (76.2 x 52.07 cm)

Gift of Ruth Carter Stevenson



**208.** Graham Sutherland

*Insects (Bugs)*, 1963

Lithograph

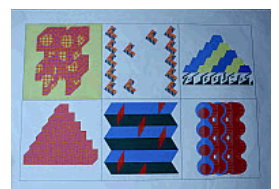
Sheet: 30 x 20 1/2 inches (76.2 x 52.07 cm)

Gift of Ruth Carter Stevenson



## Checklist

- 209.** James Swann  
*Half Moon Bay*, 20th century  
Drypoint etching  
Image: 8 3/8 x 6 3/8 inches (21.27 x 16.19 cm)  
Sheet: 10 5/8 x 8 1/4 inches (26.99 x 20.96 cm)  
Museum Collection, Gift of Mrs. J. Elmer Thomas
- 210.** Peter Takal  
*Images Devised to Kill Mermaids by Nostalgia*, undated  
Lithograph  
Overall: 11 x 11 inches (27.94 x 27.94 cm)  
Gift of Ruth Carter Stevenson
- 211.** Herbert Tallant  
*In Colorado*, 1898  
Watercolor  
Unframed: 8 5/8 x 16 5/8 inches (21.91 x 42.23 cm)  
Framed: 15 x 23 x 1/2 inches (38.1 x 58.42 x 1.27 cm)  
Museum Collection, Gift of Mrs. J. C. McCabe
- 212.** E. Marroni Tasini  
*St. Jacopo Sopa Arno-Firenze*, undated  
Etching  
8 x 12 inches  
Museum Collection, Gift of Mr. William E. Scott
- 213.** Patricia Tillman  
*Crawl Space*, 1987  
Wood and paint  
Overall: 45 x 24 x 5 inches (114.3 x 60.96 x 12.7 cm)  
Gift of Mary F. Phillips
- 214.** Joe Tilson  
*Ziggurat 3*, 1975  
Print on paper  
Sheet: 27 x 39 inches (68.58 x 99.06 cm)  
Gift of Ruth Carter Stevenson



## Checklist

**215.** Henri de Toulouse-Lautrec

*Au pied du Sinai*, 1898

Lithograph

Image: 9 x 6 3/4 inches (22.86 x 17.15 cm)

Framed: 19 1/4 x 16 inches (48.9 x 40.64 cm)



**216.** Paul B. Travis

*Clearing the Congo Forest*, 1933

Lithograph

Image: 8 1/8 x 10 7/16 inches (20.64 x 26.51 cm)

Sheet: 12 7/8 x 18 inches (32.7 x 45.72 cm)

Museum Collection, Gift of Mrs. H. H. Brittingham



**217.** Harrell E. Trantham

*Lady in the Beauty Parlor or fine Hereford*, undated

Oil on canvas

Unframed: 20 3/4 x 24 1/2 inches (52.71 x 62.23 cm)

Framed: 24 1/4 x 28 1/2 x 2 inches (61.6 x 72.39 x 5.08 cm)

Museum Collection, Purchased from the Artist by Anonymous Contributions



**218.** Villi Treterass

*Boathouses with Figures*, 1951

Woodcut

16 x 19 1/2 inches

Museum Collection, Gift of the William E. Scott Foundation



**219.** Villi Treterass

*Landscape with Horsemen*, 1954

Woodcut

17 1/4 x 19 1/4 inches

Museum Collection, Gift of the William E. Scott Foundation



**220.** McKie Trotter

*Green Swamp*, 1952

Casein and gouache on illustration board

35.25 x 11.5 inches (89.53 x 29.21 cm)

Museum Collection, Museum purchase



## Checklist

221. McKie Trotter

Title unknown, undated

Image: 28 1/8 x 35 5/8 inches (71.44 x 90.49 cm)

Framed: 31 3/4 x 39 1/4 inches (80.65 x 99.7 cm)



222. Ansei Uchima

*Between Silences*, 1967

Print on paper

Image: 10 1/2 x 14 1/2 inches (26.67 x 36.83 cm)

Sheet: 18 x 23 1/2 inches (45.72 x 59.69 cm)

Gift of Ruth Carter Stevenson



223. Karl Umlauf

*Allegorical Forms III*, 1987

Cast paper on plywood

Overall: 60 x 36 inches

Courtesy the Artist



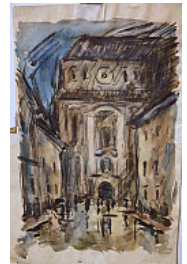
224. Unknown

Title unknown (Street scene), undated

Watercolor

Image: 12 5/8 x 8 7/8 inches (32.07 x 22.54 cm)

Museum Collection



225. Unknown

*Ponte Vecchio*, undated

Pen and ink

Image: 4 1/4 x 2 1/4 inches (10.8 x 5.72 cm)

Museum Collection, Gift of Mr. William E. Scott



226. Unknown

*Amsterdam*, undated

Etching

Image: 6 1/4 x 9 3/4 inches (15.88 x 24.77 cm)

Museum Collection, Gift of Mr. William E. Scott





## Checklist

227. Unknown

*Vaca*, undated

Oil on canvas

Unframed: 44 3/4 x 44 3/4 inches (113.67 x 113.67 cm)



228. Unknown

*L'espace et la Danse*, undated

Intaglio

Image: 17 x 21 1/2 inches (43.18 x 54.61 cm)

Sheet: 22 1/4 x 30 inches (56.52 x 76.2 cm)

Gift of Ruth Carter Stevenson

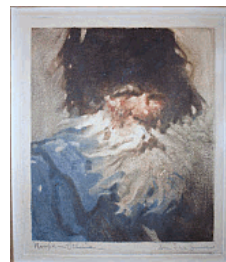


229. Unknown

*Moujik – Siberia*, undated

Intaglio with hand coloring

11 3/4 x 15 inches



230. Unknown

Title unknown, undated

Overall: 13 x 14 1/2 x 7 inches (33.02 x 36.83 x 17.78 cm)



231. Unknown

Title unknown, undated

Oil on canvas



232. Unknown

*In Disgrace*, undated

Watercolor

Image: 13 1/2 x 10 3/8 inches (34.29 x 26.35 cm)

Framed: 20 x 16 3/8 inches (50.8 x 41.59 cm)



## Checklist

233. Unknown

Title unknown, undated

Watercolor

Image: 8 x 10 inches (20.32 x 25.4 cm)

Framed: 15 1/2 x 17 1/2 inches (39.37 x 44.45 cm)



234. Unknown

*Fish*, undated

Bark painting



235. Unknown

*Fish*, undated

Bark painting



236. Unknown

*Fish*, undated

Bark painting



237. Unknown

*Fish*, undated

Bark painting



238. Unknown

*Anteater*, undated

Bark painting



## Checklist

239. Unknown  
*Fish*, undated  
Bark painting



240. Unknown  
*Fish*, undated  
Bark painting



241. Unknown  
*Fish*, undated  
Bark painting



242. Unknown  
*Crocodile*, undated  
Bark painting



243. Unknown  
*Snakes*, undated  
Bark painting



244. Unknown  
*Guinea Fowl*, undated  
Bark painting



## Checklist

245. Unknown  
*Fish*, undated  
Bark painting



246. Unknown  
*Fish*, undated  
Bark painting



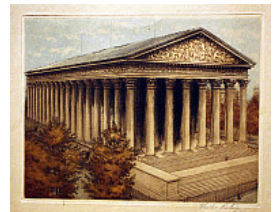
247. Bror Utter  
*Venice (Piazza di Frari)*, 1956  
Watercolor  
Unframed: 15 x 11 inches (38.1 x 27.94 cm)  
Framed: 23 7/8 x 19 3/8 x 1 1/4 inches (60.64 x 49.2 x 3.18 cm)  
Museum Collection, Gift of the William E. Scott Foundation



248. Bror Utter  
Title unknown, undated  
Watercolor  
Image: 11 1/2 x 15 1/2 inches (29.21 x 39.37 cm)  
Framed: 15 1/2 x 19 3/8 inches (39.37 x 49.21 cm)



249. Victor Valery  
Title unknown, undated  
Etching  
9 3/4 x 11 3/4 inches



250. William Walcot  
*Queens College, Oxford*, 20th century  
Etching  
Matted: 11 1/2 x 15 3/8 inches (29.21 x 39.05 cm)  
Museum Collection, Gift of M. Knoedler & Co., Inc.





## Checklist

251. Frank N. Wilcox  
*Fisherman of Percé*, 20th century  
Etching  
Image: 7 15/16 x 9 15/16 inches (20.16 x 25.24 cm)  
Sheet: 10 1/2 x 13 1/2 inches (26.67 x 34.29 cm)  
Matted: 16 x 22 inches (40.64 x 55.88 cm)  
Museum Collection, Gift of Mrs. H. H. Brittingham
252. Frank N. Wilcox  
*Re-union*, 1896  
Etching  
Image: 7 7/8 x 9 7/8 inches (20 x 25.08 cm)  
Sheet: 13 9/16 x 17 1/8 inches (34.45 x 43.5 cm)  
Matted: 16 1/4 x 22 1/4 inches (41.28 x 56.52 cm)  
Museum Collection, Gift of Mrs. H. H. Brittingham
253. George H. Wright  
*Back to Earth*, 20th century  
Etching  
Image: 9 3/16 x 12 3/16 inches (23.34 x 30.96 cm)  
Sheet: 14 x 19 inches (35.56 x 48.26 cm)  
Matted: 14 x 19 inches (35.56 x 48.26 cm)  
Museum Collection, Gift of Mrs. J. Elmer Thomas
254. Chizuko Yoshida  
*Spring A*, undated  
Color woodcut  
Image: 14 3/4 x 9 1/2 inches (37.47 x 24.13 cm)  
Sheet: 16 x 11 inches (40.64 x 27.94 cm)  
Gift of Ruth Carter Stevenson
255. Adja Yunkers  
*Summer in Venice I*, 1966  
Lithograph (5 stones)  
Image: 13 7/16 x 9 1/8 inches (34.13 x 23.18 cm)  
Sheet: 18 1/4 x 14 inches (46.36 x 35.56 cm)  
Museum Collection, Gift of Mr. and Mrs. Edward R. Hudson, Jr.
256. Bela Zaboly  
*Trees*, 1933  
Drypoint  
Image: 6 7/8 x 4 1/16 inches (17.46 x 10.32 cm)  
Sheet: 19 13/16 x 12 5/8 inches (50.32 x 32.07 cm)  
Museum Collection, Gift of Mrs. H. H. Brittingham



## Checklist

257. Karl Zerbe

*Houses - Gentilly*, 20th century

Gouache

Unframed: 16 3/4 x 23 3/4 inches (42.55 x 60.33 cm)

Framed: 26 1/2 x 33 1/2 x 1 1/2 inches (67.31 x 85.09 x 3.81 cm)

Museum Collection, Museum purchase



*This checklist is subject to change.*

*The Museum warrants that it is the owner of the Artwork and has the right to transfer ownership of the Artwork. Except as set forth in the preceding sentence, the Museum does not make any representations or warranties, express or implied, with respect to the Artwork (e.g., authenticity, value, etc.), and the Museum hereby disclaims any such warranties. The Artwork is being sold on an "as is," "where is" basis with all faults. Bidders waive any claims for allowance, adjustment or rescission based upon failure of the Artwork to conform to any expectation or standard. All sales of the Artwork are final.*