



10 PAGES

Winter 2021

Including special Milton Avery projects

Milton Avery
Dune Bushes, 1958
Oil on canvas
54 1/8 x 65 7/8 x 1 1/4 inches
Collection of the Modern Art
Museum of Fort Worth,
Museum purchase, William E.
Scott Foundation by
Exchange
© The Milton and Sally Avery
Arts Foundation

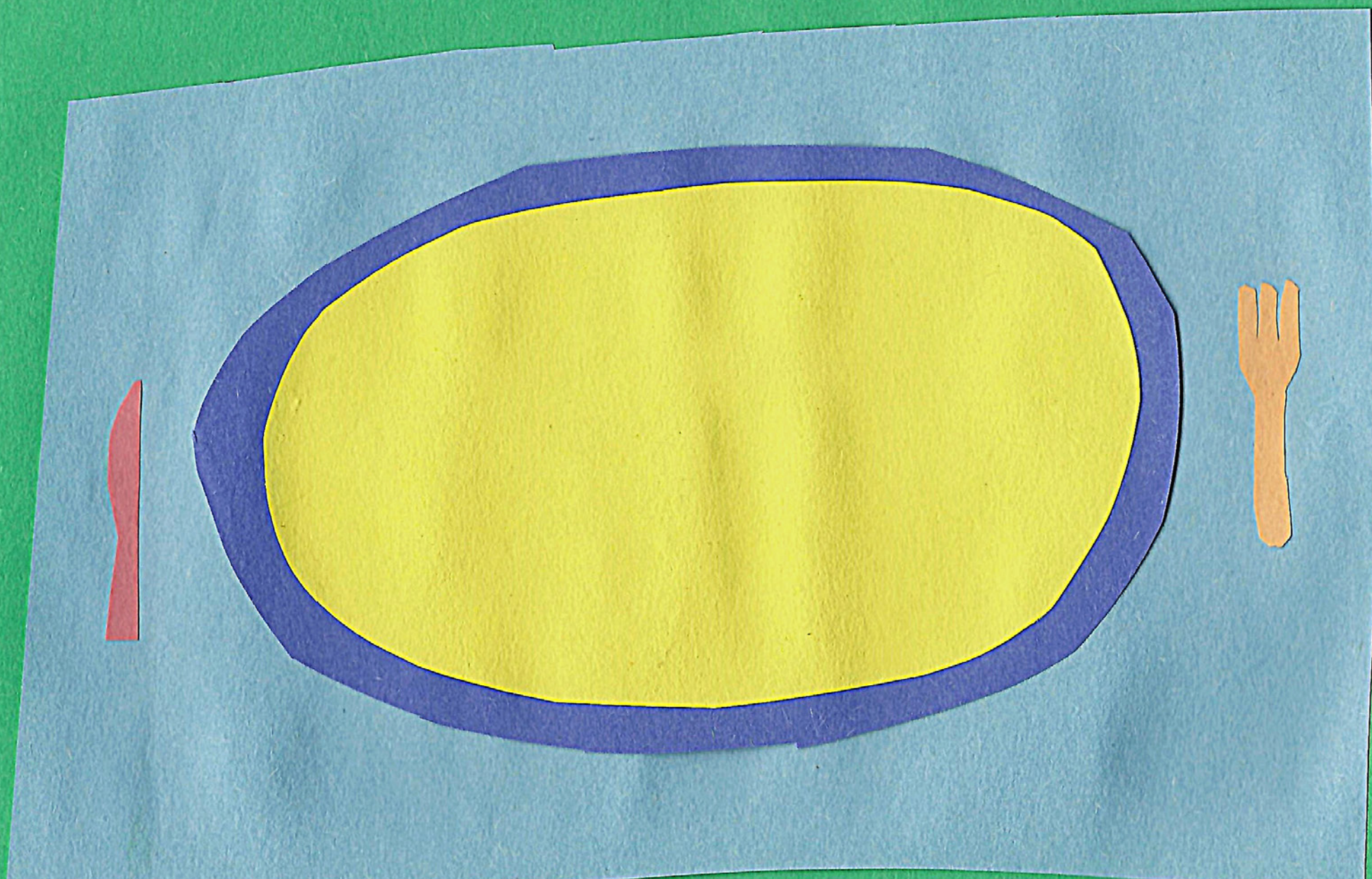
YOU'RE ON A SPEED BOAT.

Glue together two pieces of blue construction paper. Imagine what path your boat would take on the ocean's surface. Use a white pencil and draw your path with a tiny speed boat at the end.

A PLATE OF MILTON AVERY HORS D'OEUVRES

MAKE A SNACK!

GRAB SOME COLOR PENCILS AND DRAW YOUR SNACK.
CUT OUT YOUR DRAWINGS AND ARRANGE THEM ON A FLAT AND SIMPLE
CONSTRUCTION PAPER PLACE SETTING.



LOOKING AT MILTON AVERY'S
PAINTINGS OF BEACHGOERS

FOAM BATHER PRINT

1. Save the lid of an old Styrofoam take-out container.
2. Use a pencil to deeply scratch a drawing of a simple beach scene. Make sure to create a clear horizon line.
3. Pick two colors of paint and use a foam brush to thinly apply one color below the horizon and another above.
4. Quickly, before the paint dries, lay a piece of paper over the foam. Gently rub the back of the paper with the back of a spoon. Lift up and reveal your print.
5. Wash off your foam and print more!



MILTON AVERY STILL LIFE AND COLOR PHOTO PROJECT



GO ON A ROCK HUNT!

1. Use acrylic paint and paint each rock in a solid color.
2. Grab a large piece of watercolor paper. Fold it in half.
3. Paint the bottom half a solid color. Divide the top half into two colors with a hard line in between.
4. Once dry, place your paper against a wall with the solid color half trailing onto the floor. Tape down the edges with masking tape.
5. Place your rocks on the solid color base.
6. Try different arrangements till you find one that you love.
7. Get down low on the floor and snap a photo. Keep all the background inside the edges of the image frame.

A COLORIST FAMILY PORTRAIT

FIND A GOOD FAMILY PHOTO.

Use tracing paper and trace just the outlines and basic shapes of each family member.

Flip over your tracing paper and use markers to color in the shapes.

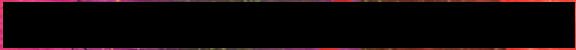
Build new color relationships. Fill in the shapes with the "wrong" colors for everything.





**LOOKING AT MORRIS LOUIS,
DALET KAF, 1959**

**COLOR
FIELD
SQUEEGEE
PAINTING**

- 
1. PLACE A FEW DROPS OF ACRYLIC PAINT ON THE TOP EDGE OF A CANVAS BOARD.
 2. USE AN OLD GIFT CARD TO CAREFULLY SQUEEGEE THE PAINT DOWN THE CANVAS. CLEAN YOUR GIFT CARD SQUEEGEE BETWEEN PULLS.
 3. LET DRY COMPLETELY AND THEN REPEAT. LAYER MULTIPLE COLORS.



Botanic Drawing

**WANDER AROUND YOUR
BACKYARD OR THE PARK.**

Look for an interesting tree, or leaf, or any other foliage.

**GRAB YOUR PENCIL
AND A PIECE OF
TRACING PAPER.**

*Carefully draw just the outline of your selected
object from nature.*

**FLIP OVER TO THE
BACKSIDE OF YOUR
TRACING PAPER.**

*Fill in the forms and details of your drawing on the
backside with markers or colored pencil. Use your
pencil to add shadow and depth and your finger or a
paper towel to smudge and soften the graphite.*

MARK ROTHKO

SMUDGE DRAWING

Mark Rothko was a friend and contemporary of Milton Avery. He was also interested in color theory and abstract paint application. Rothko is known for his dreamy clouds of color. Supplies: mixed media paper, pastels, and a paper towel

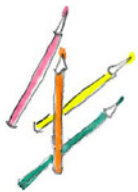
1. Pick a color and lay down a solid ground.
2. Pick a couple more colors and overlay some soft rectangles or other simple shapes in varying sizes.
3. Wrap a paper towel around your finger and smudge the layers together and blur the edges.



AN EXQUISITE LANDSCAPE

Supplies:

Color Pencils



Gluestick



BBQ Sticks

1 BACKGROUND



Draw a sky scene on two of the notecards.



Make them colorful!

Examples: clouds, night stars, sunny blue sky, or snowy blizzard

2 MIDDLE GROUND



Draw a distant landscape on two of the notecards.



Examples: mountains, ocean, or dense forest

3 FOREGROUND

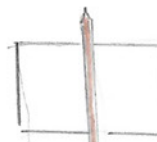


Draw a foreground on two of the notecards.



Examples: people building sandcastles, ice skaters, cows grazing, or traffic

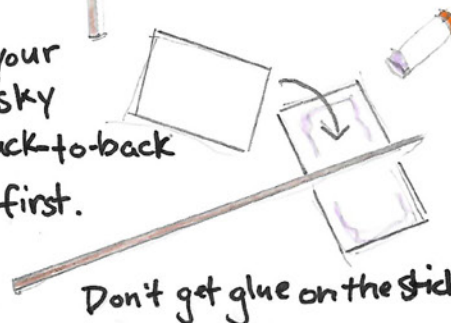
4



Lay one sky card face down.

Place your BBQ stick along the back.

Glue your second sky card back-to-back to the first.

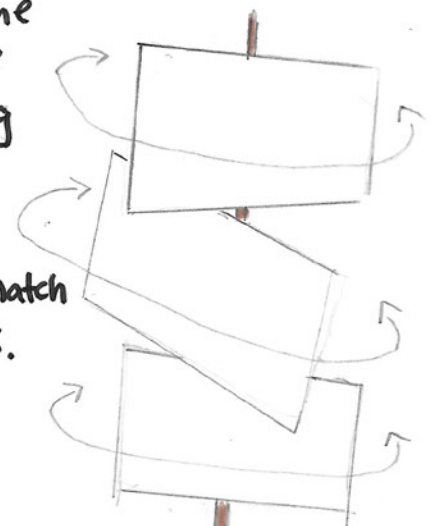


Don't get glue on the stick!

5

Repeat step 4 with your remaining cards.

Change the landscape by flipping the cards and mix and match the scenes.



Sunset and Shadow Mobile

Adolph Gottlieb

Supplies:

Foam paper

Scissors

Yarn

Glue

Step 1: Choose a few sunset colors. Use a cup or small bowl and trace two circles on each foam sheet. Cut out the circles.

Step 2: Place a long piece of yarn between the circles and glue them together.

Step 3: Trace large circles on black foam sheets. Start at the edge of the circle and gradually cut around to make a spiral.

Step 4: Glue the shadow spirals to the suns.

